

IMPORTANT NOTE regarding serial number of AR5000:

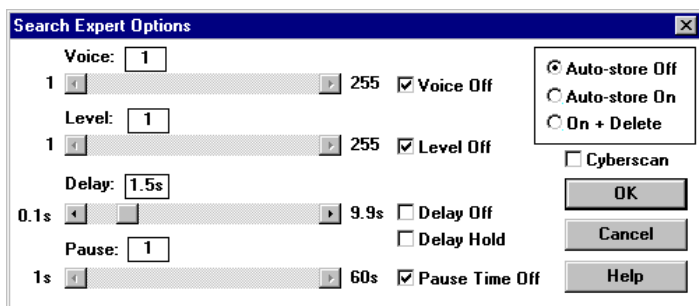
- ① This package fully supports the AR5000+3 receiver (serial numbers start around **070660**).
- ② All standard AR5000 units with serial number **070000** or higher are supported.
- ③ Units with serial numbers starting with the number **5** may provide **varying levels of compatibility** (initially s-meter was in 64 not 256 steps and some commands have changed). For this reason **it is recommended that the TUNER DEMO be tested out first to establish compatibility**, this demo may be available from your supplier or via internet from a link on the AOR UK home page <http://www.demon.co.uk/aor>

When running the data-base toolkit for the first time:

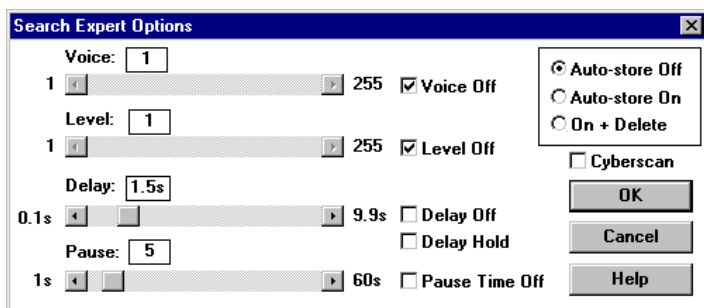
The data-base toolkit looks for the directory used for the tuner application, as the data-base is also used for Data-Master control software, it will not find the default for Spectrum Master C:\SPECMAS (nor will it find it if you have not used the default directory during the tuner application installation). You will be prompted to enter the location of the tuner directory, if you have used the default type **C:\SPECMAS** otherwise use a valid path name.

Frequency display during scan & search:

Due to the way the AR5000 produces signal level output, a frequency readout and signal level will only be displayed if the PAUSE TIME is set to a numeric value in the SEARCH/EXPERT and SCAN/EXPERT menus... see figure:-



OFF = frequency NOT displayed



5 = ON, frequency IS displayed

Please note: Two sets of TUNER disks are now provided, one set for Windows95 and another for Windows98... they are marked **W95 / W98**. Each version provides different copy protection drivers more suited to the specified operating system, but of course you may experiment and use either with earlier version of Windows 3.1x, however use them only in pairs!

P.T.O.

DOS ENVIRONMENT memory considerations when installing AOR PC control software:

One copy protection "TOKEN" is automatically transferred from the master disk to the target directory (while running in WINDOWS by creating a DOS SHELL ENVIRONMENT... this will be unseen as it all happens in background).

If your machine has a very low level of available memory (due to poor setup or many SCSI drivers etc) the process may fail. Before installation and before launching WINDOWS type:

MEM [enter] at the DOS prompt.

The report may look like (based upon a 486SX25 with 8MB RAM):

Memory Type	Total	=	Used	+	Free
Conventional	640K		38K		602K
Upper	155K		92K		63K
Reserved	128K		128K		0K
Extended (XMS)	7,269K		2,269K		5,000K
Total memory	8,192K		2,527K		5,665K
Total under 1 MB	795K		130K		665K

Largest executable program size **602K (616,016 bytes)**
Largest free upper memory block 63K (64,064 bytes)
MS-DOS is resident in the high memory area.

The LARGEST EXECUTABLE PROGRAM SIZE (third line from the bottom) should be greater than 540K. If the reported memory is lower and you are running MS-DOS 6.xx type:

MEMMAKER [enter] at the DOS prompt.

This will cause DOS to automatically optimise your memory setup and should release sufficient memory to permit safe installation. If there still appears a very low memory report, check the CONFIG.SYS and AUTOEXEC.BAT files to see if there are a lot of drivers being loaded. If there are a lot of drivers, temporarily REM them out, reboot the computer and check "MEM" again.

As a SHELL is used, ensure that plenty of environment space allocated in the CONFIG.SYS file. Check that a DOS SHELL line exists:

```
DEVICE=C:\DOS\HIMEM.SYS
DEVICE=C:\DOS\EMM386.EXE NOEMS
BUFFERS=30,0
FILES=50
DOS=UMB
LASTDRIVE=E
FCBS=4,0
DEVICEHIGH /L:1,12048 =C:\DOS\SETVER.EXE
DOS=HIGH COUNTRY=044,,C:\DOS\COUNTRY.SYS
DEVICEHIGH /L:1,15792 =C:\DOS\DISPLAY.SYS CON=(EGA,,1)
DEVICEHIGH /L:1,9072 =C:\DOS\ANSI.SYS
SHELL=C:\DOS\COMMAND.COM C:\DOS\ /p /e:1024
```

The switch /e:1024 should be added if not already there to ensure that there is plenty of environment space present.

Check that the number of FILES available are also set to at least 50 in CONFIG.SYS

The master disk contains TWO TOKENS so if you have encountered problems when installing first time, remove any directory which has been created (and program group in WINDOWS and additions in WIN.INI - see below). You can then try to install a second time bearing the above memory points in mind.

When installing the data-base toolkit, two entries are made in the WIN.INI file, without these additions "language driver" error messages will be encountered. There is a finite length to the WIN.INI file, if you have a lot of PS fonts loaded, the additions may fall off the bottom of the file !!! In this case the data-base will not run. If problems occur, have a look what can be deleted from the WIN.INI file (safely) or move the additions up the WIN.INI file before the fonts are loaded. If you wish to "cleanly" remove the data-base toolkit from your system, remove these entries manually. The entries are:

```
[ IDAPI ]
CONFIGFILE01=C:\AORDATA\IDAPI.CFG

[Borland Language Drivers]
LDPath=C:\AORDATA\LANGDRV
```

If you have the data base installed and use more than one AOR software package supporting the toolkit (Data-Master & Spectrum-Master), you can "point" the data base at the correct tuner directory by editing the text file in the data base toolkit directory called TOOLKIT.SYS