



SEARCHLIGHT FOR *WINDOWS*

Computer control for the AR3000A & AR3000 receivers

SEARCHLIGHT FOR *WINDOWS* is the latest software package for the IBM (and 100% compatible) computer which allows control of the AOR AR3000A and AR3000 receivers using the RS232 serial port of the computer. SEARCHLIGHT makes full use of the Graphical User Interface (GUI) and is a genuine *Windows* program (not a DOS program running in a window) and permits sizeable and background operation using Microsoft's Multiple Document Interface (MDI) and Common User Access (CUA) specifications for ease of use and a standard "look and feel".

SEARCHLIGHT is distributed on 3.5 inch media but 1.2 Mbyte 5.25 inch is available to order. There is an accompanying A5 printed (not photo copied) operating manual with a spiral binder for ease of use on a crowded table top. AOR SEARCHLIGHT is copy protected. **A DEMO disk is available for £3.00 including P&P and VAT...** the DEMO disk only runs for 10 minutes each session but does provide full functions.

The following features (and more) are offered:

- **Microsoft *Windows* Program.** Sizeable windows in foreground and background with a standard look and feel.

- **On-line context sensitive help.** The full *Windows* hypertext help system is used to provide the information you need wherever you are in AOR SEARCHLIGHT. In addition to the help menu, dialogues have a "help" push button which calls up information specific to that dialogue. You may also highlight individual menu options using the arrow keys to obtain specific help by pressing <F1>.

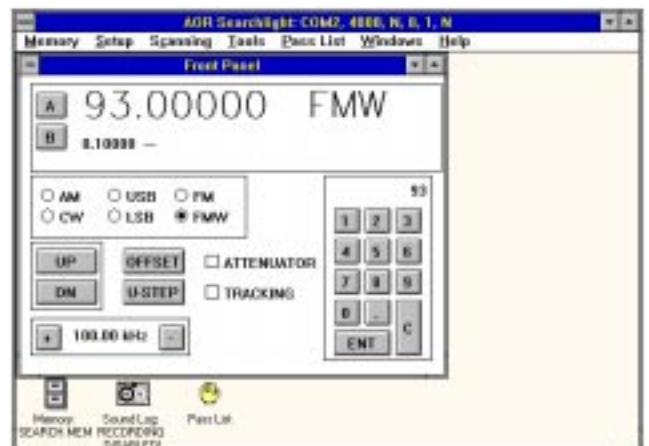
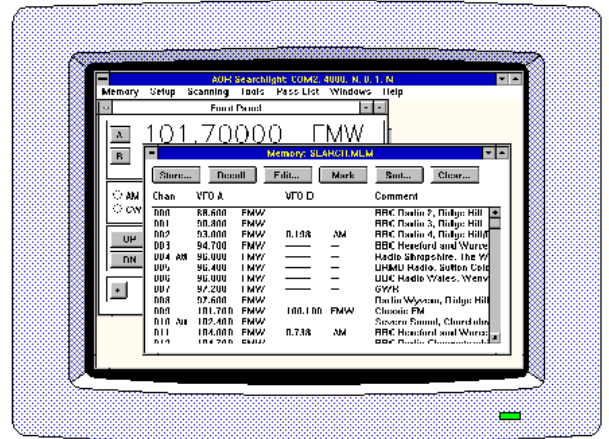
- **Full support for *Windows* Sound Recording.** Should you have a correctly configured multimedia compatible sound card, you may record audio from your receiver while scanning or analysing frequencies. SEARCHLIGHT uses the sound recording facilities of *Windows* Multimedia extensions (.WAV files). A log contains all the recordings you have made so that you may replay them at a later time through SEARCHLIGHT or standard *Windows* applications.

- **Unlimited number of disk based memory banks.** Each memory bank contains 400 memory channels and can be uploaded or downloaded to and from the receiver. Up to 10 banks may be viewed on-screen at once and an unlimited number may be stored to disk (restricted by available disk space only).

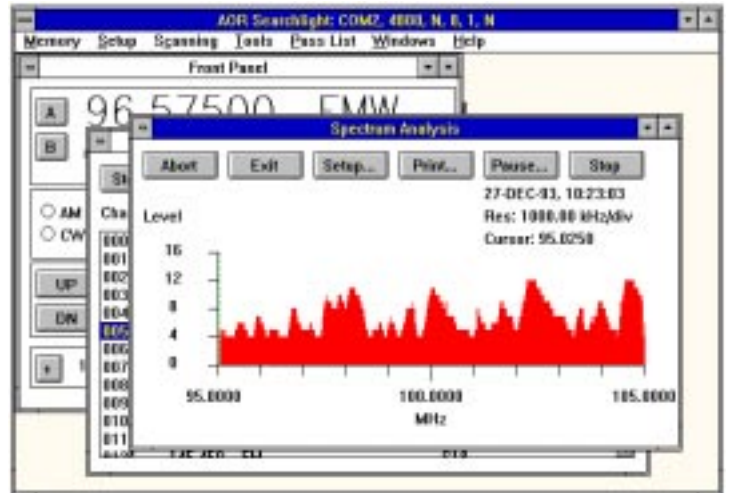
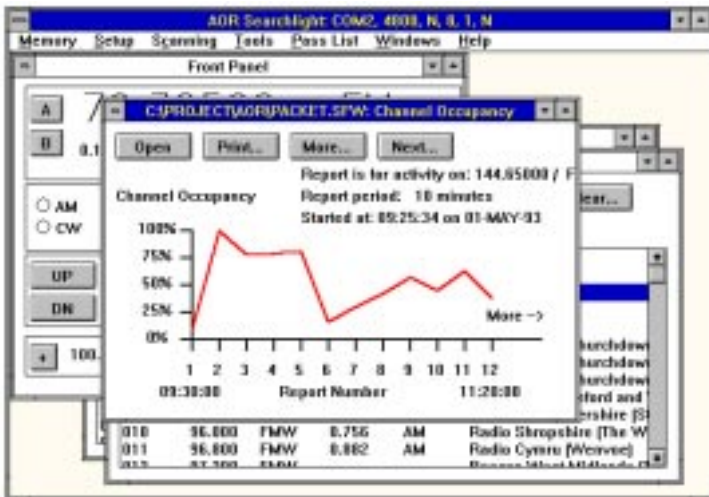
- **Copy data to & from clipboard.** You can exchange memory data with *Windows* Clipboard for bulk editing and export to a data base (not supplied) or other *Windows* applications.

- **Memory scan and Programmable Band Scan.** Each type of scan provides a histogram display showing the activity of each channel. Full control is provided including a cursor indicator and sound recording (optional).

- **Single Frequency Watch.** This includes graphical analysis showing full statistics compiled as the SFW is in progress and includes text based reports and a log file.



- **Spectrum analysis.** A fully featured spectrum analyser / band occupancy display is provided which allows you to review signals using cursor operated tuning. You can recall the results of several spectrum analyses on-screen at once.
- **Import your DOS based AORSC memory files.** For AORSC users, you may import your existing AOR Spectrum Coordinator (AORSC) memory files into AOR Searchlight using a simple utility provided as standard.
- **Upgrade-ability.** SEARCHLIGHT is intended to provide the facilities you require to monitor signals in the radio spectrum. For further information on what can be heard, you should refer to one of the many listening guides which are available. SEARCHLIGHT will continue to be enhanced and upgraded in due course so keep an eye out for new developments. Upgrades should become available at about one third of the original purchase price of the package... all you need to do is return your master disk (check costs with your supplier before shipping).



Minimum System Requirements:

- ☞ 25MHz 80386 IBM PC compatible or above
- ☞ 4 Mbytes of memory or more
- ☞ Microsoft compatible mouse
- ☞ At least one serial port (COM1, 2, 3 or 4) plus lead for the receiver connection (and possibly one other port or the mouse)
- ☞ 2 Mbytes of free hard disk space
- ☞ Microsoft *Windows* 3.1 (or higher) or Microsoft *Windows for Workgroups* 3.1 (or higher) running in enhanced mode
- ☞ An AOR AR3000A or AR3000 communications receiver
- ☞ (Optional) Windows multimedia compatible sound card (i.e. Creative Labs Sound Blaster 2.0 or compatible). This is highly recommended
- ☞ (Optional) Printer supported by *Windows*

Note: Scan and search speeds are slower when under "computer control" when compared to "real mode" operation.



Microsoft, Windows, Windows for Workgroups, MS-DOS etc are trade marks of the Microsoft Corporation. IBM, PC etc are trade names of International Business Machines. Sound Blaster is a trade name of Creative Labs. All other trade marks and names acknowledged. E&OE Rev 1.2