



CONCERTO FOR *WINDOWS*

Computer control for the AR3030 receiver

CONCERTO FOR *WINDOWS* is a PC based software package for the IBM (and 100% compatible) computer which allows control of the AOR AR3030 receiver using the RS232 serial port of the computer. CONCERTO makes full use of the Graphical User Interface (GUI) and is a genuine *Windows* program (not a DOS program running in a window) and permits sizeable and background operation using Microsoft's Multiple Document Interface (MDI) and Common User Access (CUA) specifications for ease of use and a standard "look and feel".

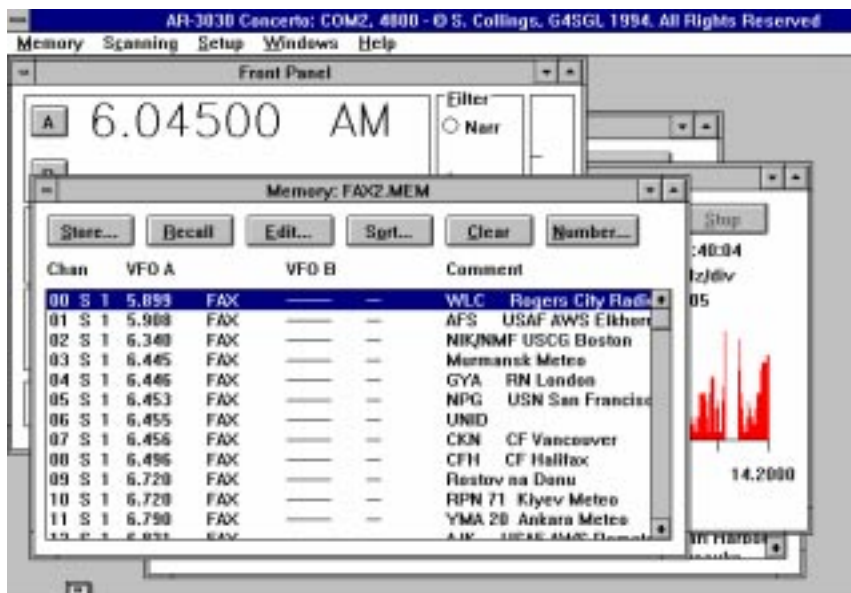
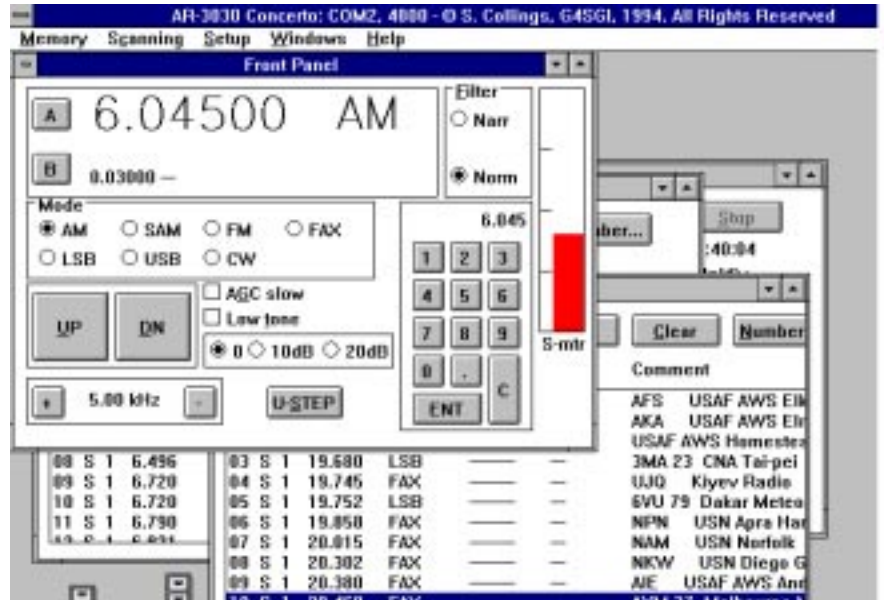
CONCERTO is distributed on 3.5 inch media but 1.2 Mbyte 5.25 inch is available to order. There is an accompanying A5 printed (not photo copied) operating manual with a spiral binder for ease of use on a crowded table top. AOR CONCERTO is copy protected.

- **Microsoft *Windows* Program.**

Sizeable *Windows* in foreground and background with a standard look and feel. CONCERTO is not simply a DOS program running in a *Window*. Unlike many *Windows* applications, CONCERTO does not write to the WIN.INI and SYSTEM.INI files but holds it's own INI file in a separate directory, this facilitates a simple and uncluttered installation.

- **On-line context sensitive help.** The full *Windows* hypertext help system is used to provide the information you need wherever you are in AOR CONCERTO. In addition to the help menu, dialogues have a "help" push button which calls up information specific to that dialogue. You may also highlight individual menu options using the arrow keys to obtain specific help by pressing <F1>.

- **Unlimited number of disk based memory banks.** Each memory bank contains 100 memory channels each memory channel is capable of holding two frequencies (VFO A & VFO B). Up to 10 banks may be viewed on-screen at once and an unlimited number may be stored to disk (restricted by available disk space only). There are ten "family groups" in each memory bank which permits easy sorting and scanning of "like" frequencies.



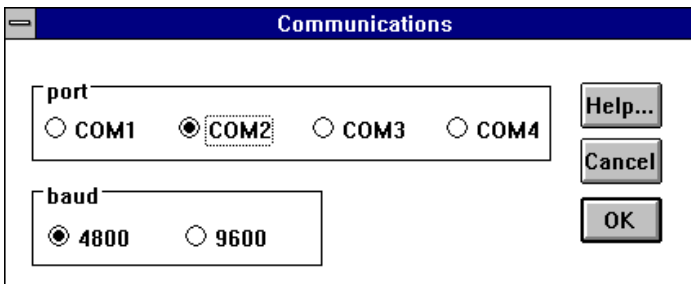
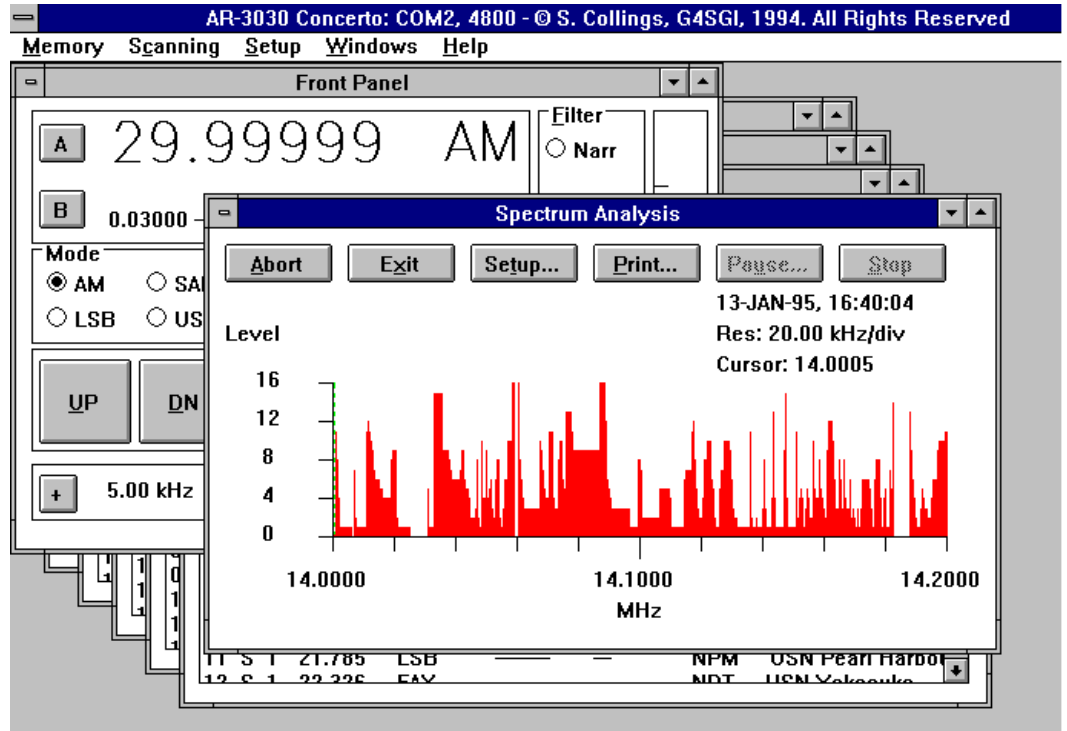
- **Upload & download.** Memory banks may be transferred to and from the receiver in order to provide the maximum flexibility should you change the type of signal being monitored or location.

- **Copy data to & from clipboard.** You can exchange memory data with *Windows* Clipboard for bulk editing and export to a data base (not supplied) or other *Windows* applications.

- **On screen status.** Full operational status is displayed on screen, mode, frequency, attenuator, filter etc as well as switchable s-meter.

- **Spectrum analysis.**
A fully featured spectrum analyser / band occupancy display is provided which allows you to review signals using cursor operated tuning. You can recall the results of several spectrum analyses on-screen at once.

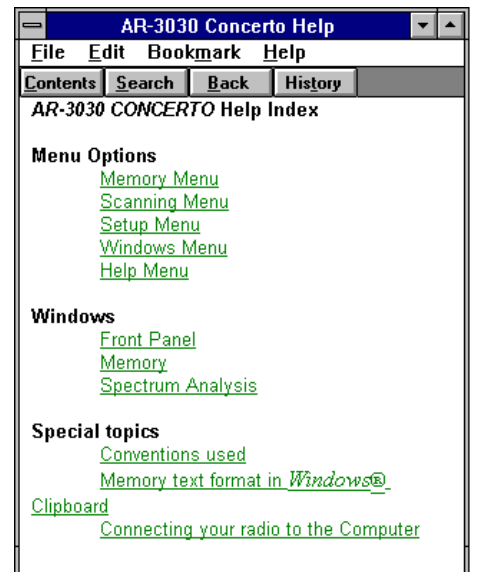
- **Easy connection.**
The AR3030 provides RS232 compatible signals directly with no need for a separate interface. A standard RS232 lead with a minimum 3 wire configuration is required for connection to a PC and control using CONCERTO. CONCERTO supports COM1, 2, 3 & 4 with RS232 speeds of 4800 & 9600 bps (selectable from CONCERTO).



- **Upgrade-ability.** CONCERTO is intended to provide the facilities you require to monitor signals in the short wave bands. For further information on what can be heard, you should refer to one of the many listening guides which are available. CONCERTO will continue to be enhanced and upgraded in due course so keep an eye out for new developments. Upgrades should become available at about one third of the original purchase price of the package... all you need to do is return your master disk (check costs with your supplier before shipping).

Minimum System Requirements:

- ☞ 25MHz 80386 IBM PC compatible or above
- ☞ 4 Mbytes of memory or more
- ☞ Microsoft compatible mouse
- ☞ At least one serial port (COM1, 2, 3 or 4) plus lead for the receiver connection (and possibly one other port or the mouse)
- ☞ 2 Mbytes of free hard disk space
- ☞ Microsoft *Windows* 3.1 (or higher) or Microsoft *Windows for Workgroups* 3.1 (or higher) running in enhanced mode
- ☞ An AOR AR3030 communications receiver
- ☞ (Optional) Printer supported by *Windows*



Microsoft, Windows, Windows for Workgroups, MS-DOS etc are trade marks of the Microsoft Corporation. IBM, PC etc are trade names of International Business Machines. All other trade marks and names acknowledged. E&OE